




BASIC AutoCAD 2D

***+ Workshop Drawing the pipe
By use basic commands***



Compiled by

Nat Mahasuwan

B.Eng. Mechanical Engineering

Mahidol University

2nd Class Honors



Contents	Page
<u>Before using AutoCAD</u>	<u>1</u>
<u>Chapter 1 Basic Commands</u>	<u>4</u>
<u>-1.1 Line command</u>	<u>5</u>
<u>-1.2 Zoom in and out, using the mouse roller</u>	<u>6</u>
<u>-1.3 Polyline command</u>	<u>7</u>
<u>-1.4 Move Command</u>	<u>10</u>
<u>-1.5 Fillet Command</u>	<u>12</u>
<u>-1.6 Offset Command</u>	<u>15</u>
<u>-1.7 Copy command</u>	<u>17</u>
<u>-1.8 Trim Command</u>	<u>19</u>
<u>-1.9 Extent command</u>	<u>21</u>
<u>-1.10 Scale command</u>	<u>23</u>
<u>-1.11 Rotate command</u>	<u>31</u>
<u>-1.12 Mirror Command</u>	<u>33</u>

Contents	Page
<u>-1.13 Command to create squares</u>	<u>36</u>
<u>-1.14 Command to Create a circle</u>	<u>40</u>
<u>-1.15 Dimension command</u>	<u>42</u>
<u>-1.16 Block build command</u>	<u>48</u>
<u>-1.17 HATCH command</u>	<u>52</u>
<u>-1.18 Array command</u>	<u>56</u>
<u>-1.19 TEXT command</u>	<u>58</u>
<u>-1.20 Arrow Command</u>	<u>60</u>
<u>-1.21 Tricks in drawing</u>	<u>62</u>
<u>Chapter 2 Formatting Print</u>	<u>64</u>
<u>2.1 Printing Page Model</u>	<u>65</u>
<u>2.2 Printing Page Layout</u>	<u>68</u>
<u>2.3 Multi-sheet printing</u>	<u>76</u>

Contents	Page
<u>Chapter 3 WorkShop Practice Drawing</u>	<u>80</u>
<u>3.1 Single bend air duct</u>	<u>81</u>
<u>3.2 Split Air Duct 2 T-shaped passage</u>	<u>84</u>
<u>3.3 3-way split air duct</u>	<u>87</u>
<u>3.4 2-way split air duct Y-shape</u>	<u>90</u>
<u>3.5 Flex duct Writing</u>	<u>93</u>
 <u>CHAPTER 4 CREATING AN ON-OFF LAYER</u>	 <u>96</u>
 <u>Chapter 5 Create Plot Style</u>	 <u>99</u>

Before you access AutoCAD

Before accessing AutoCAD

1. After opening the autocad program, press New as shown in Figure a.

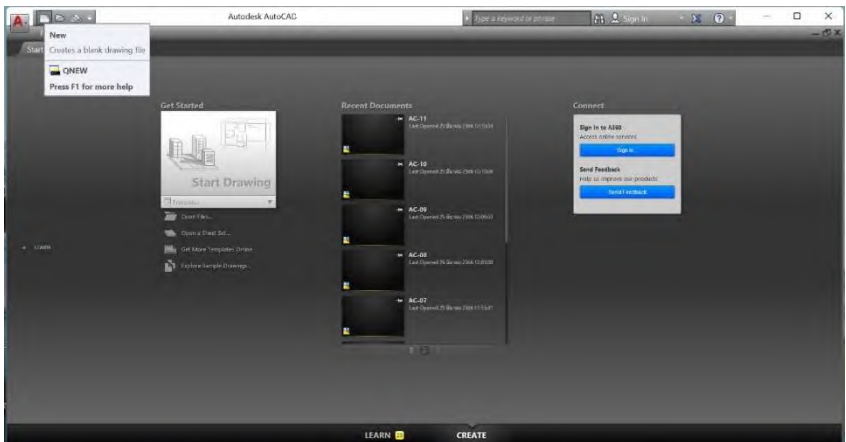
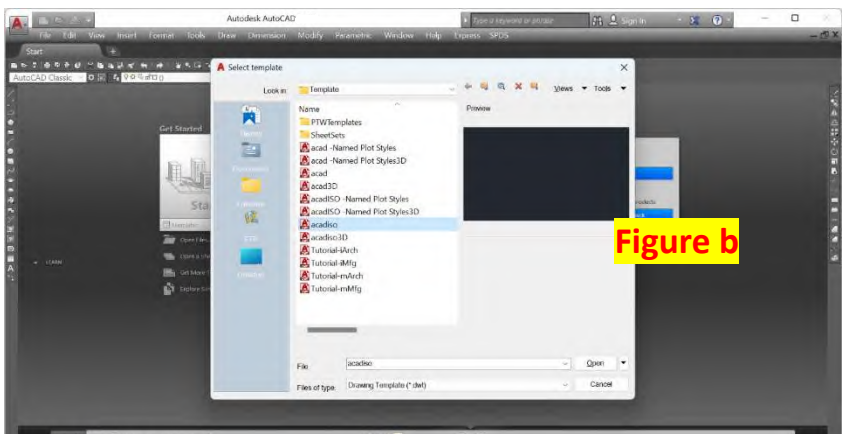
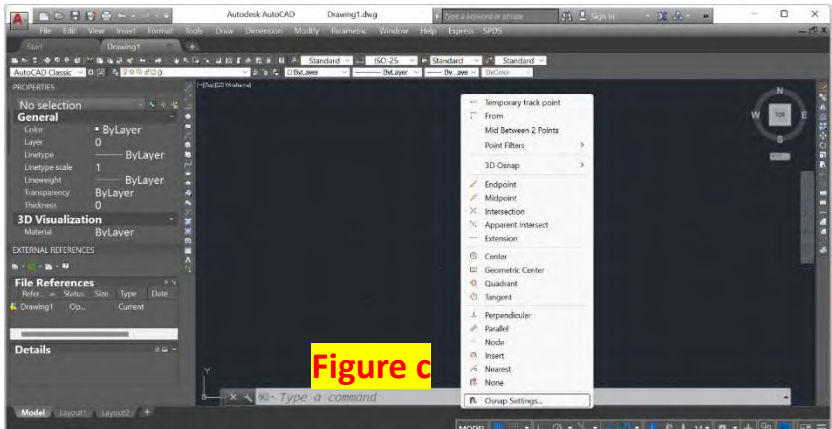


Figure A

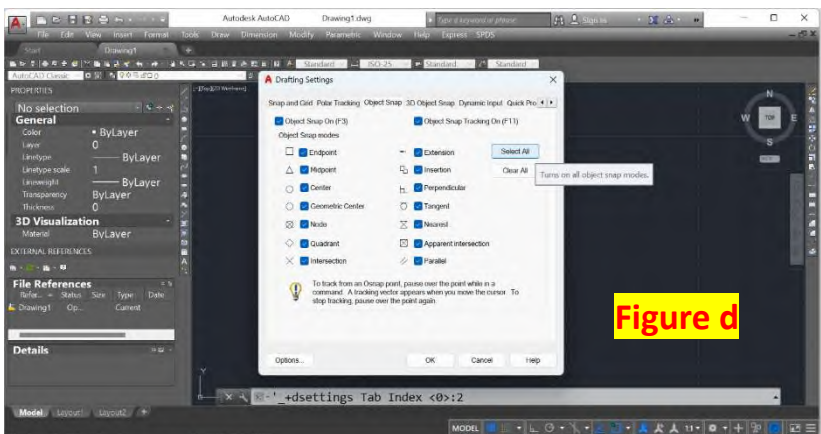
2. Then click to select acadiso as shown in Figure b.



3. After entering the autocad drawing window, press Ctrl + Shift + right-click and select Osnap Setting as shown in Figure c.



4. Then select all and press OK to turn on all snap modes for easy writing.



Chapter 1

Basic commands used in drawings

Chapter 1 Basic commands used in drawings

1.1 Line Command

- To start, enter the Line command by Type according to Figure 1.1a and press Enter.

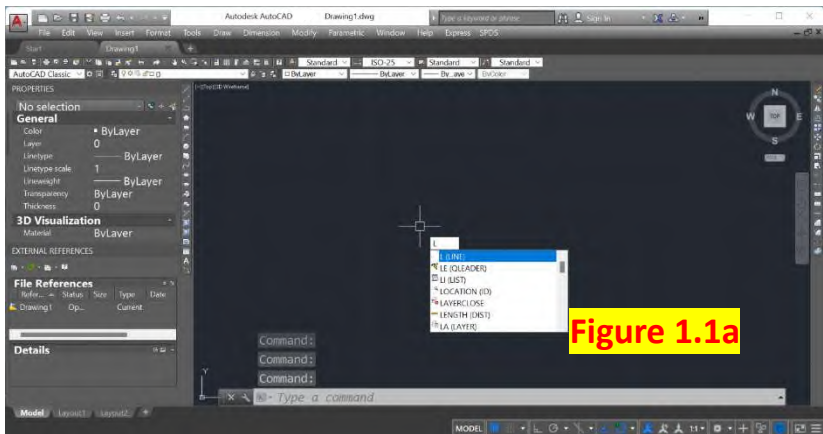
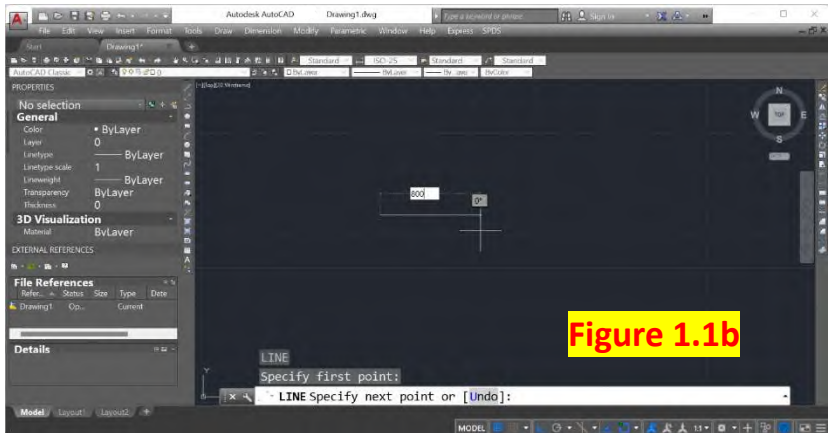


Figure 1.1a

- Then drag the line by left-clicking from where we want to start drawing 1 time and then drag the mouse or drag the line to the desired direction. While stroke, F8 may be pressed to force the drawn line to be in the X or Y axis. When you get the desired distance, left-click 1 time and press Esc or Enter or Space Bar to exit the command , or you can enter the desired distance during stroke, such as the distance of 800 units as shown in Figure 1.1b, then press

Enter to confirm and press exit from the Esc command .



1.2 Zoom in and out and PAN using mouse

- Start after we get a straight line, try to arrange the page view as shown in Figure 1.2a by using the mouse, starting by holding down the mouse roller and dragging the mouse to change the perspective (there may be some release to divide the stroke of dragging several times. for ease of changing the view.) During this time, zooming in and out may be Use the mouse roller to roll up and down (up equals zoom in, down equals zoom out) to make changing views more convenient.